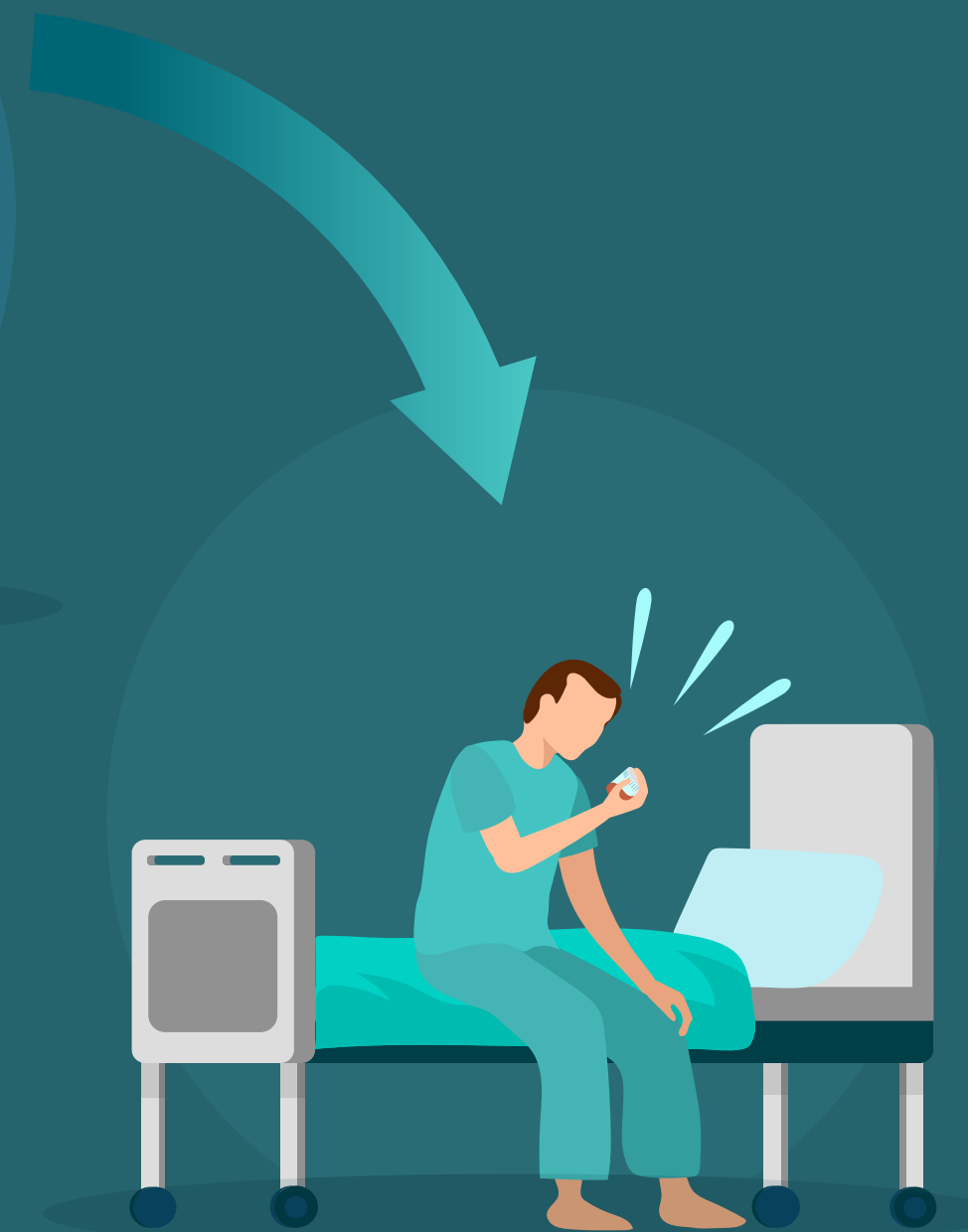


What Happens If You Self-administer Your Own Medication?

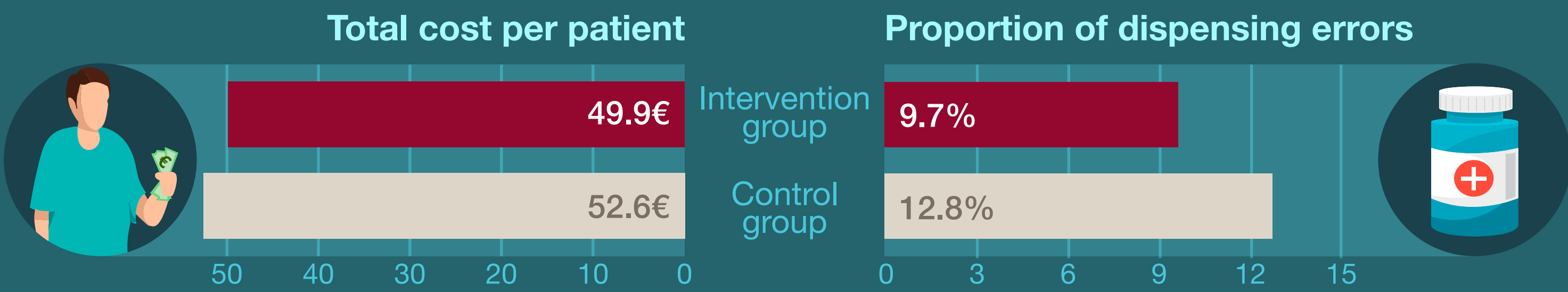
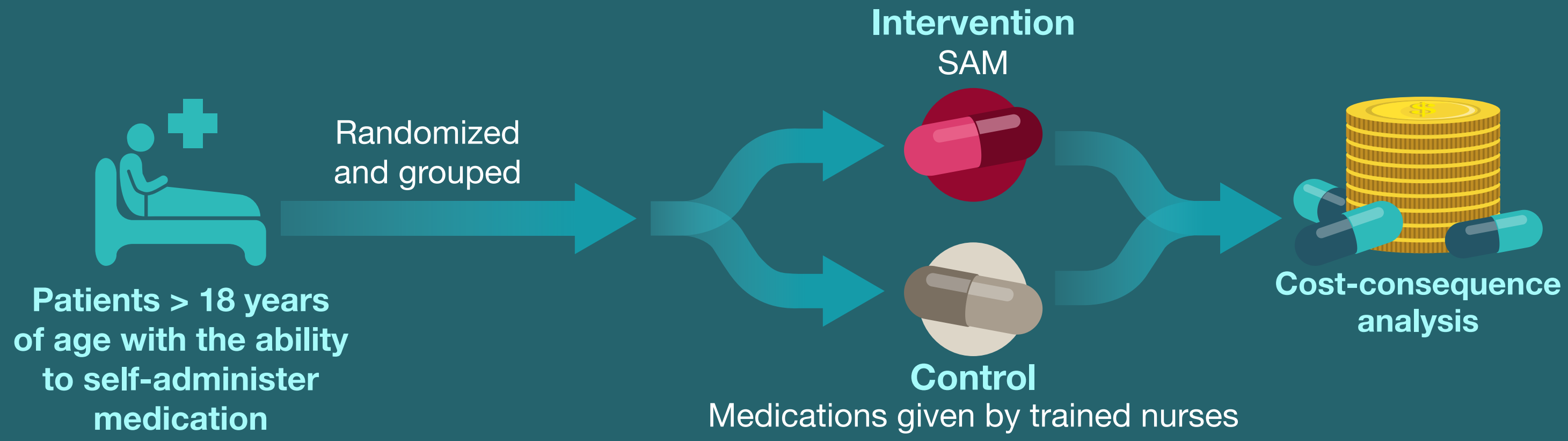
Patients are increasingly interested in influencing the course of their treatment



Self-administration of medication (SAM) is one way to support self-management that increases the independence of the patient



What are the costs and consequences of introducing SAM during hospitalization as compared to nurse-led administration of medication?



- Intervention group**
- Higher medical adherence
 - Fewer patients with deviations in the medication list at follow-up
 - Increased satisfaction

SAM has positive impacts on patient outcomes and may be cost-effective